

Die Schweiz im KI-Zeitalter

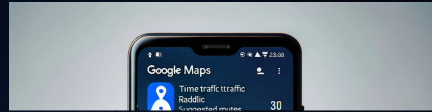
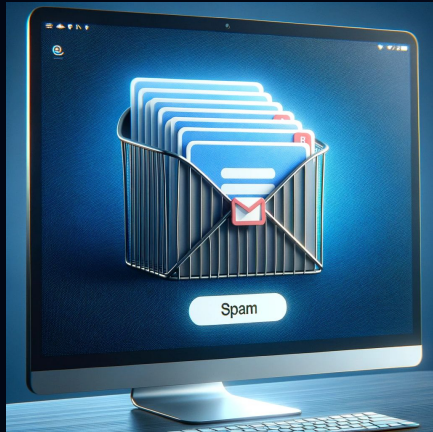
Chancen, Risiken, Positionierung

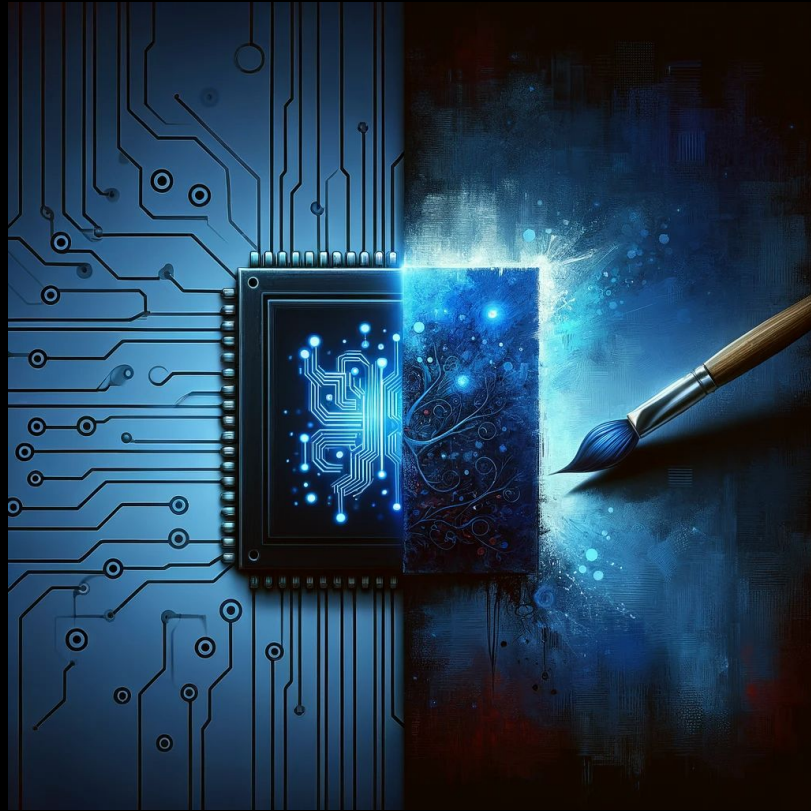
SPIK 2025

Daniel Naeff, Head of Innovation & Entrepreneurship

26. März 2025

AI is not 'new'





AI is a Force Multiplier...

Midjourney vs. Adobe

30'000 employees

OpenAI vs. Google

150'000 employees

AI is a Force Multiplier...

Midjourney vs. Adobe

10 30'000 employees

OpenAI vs. Google

350 150'000 employees

AI is a Force Multiplier...

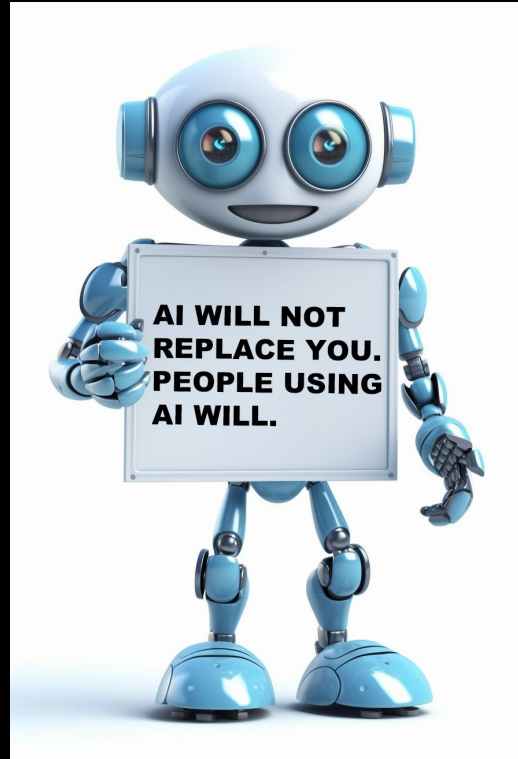
Midjourney vs. Adobe

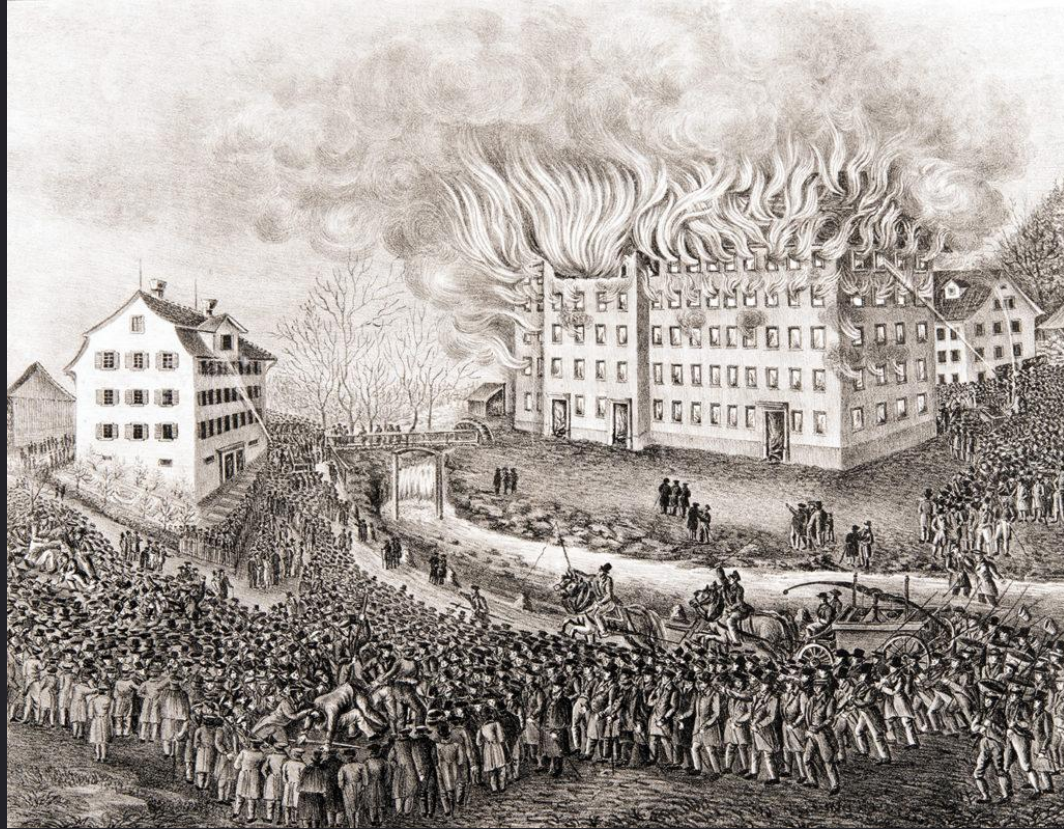
10 30'000 employees

OpenAI vs. Google

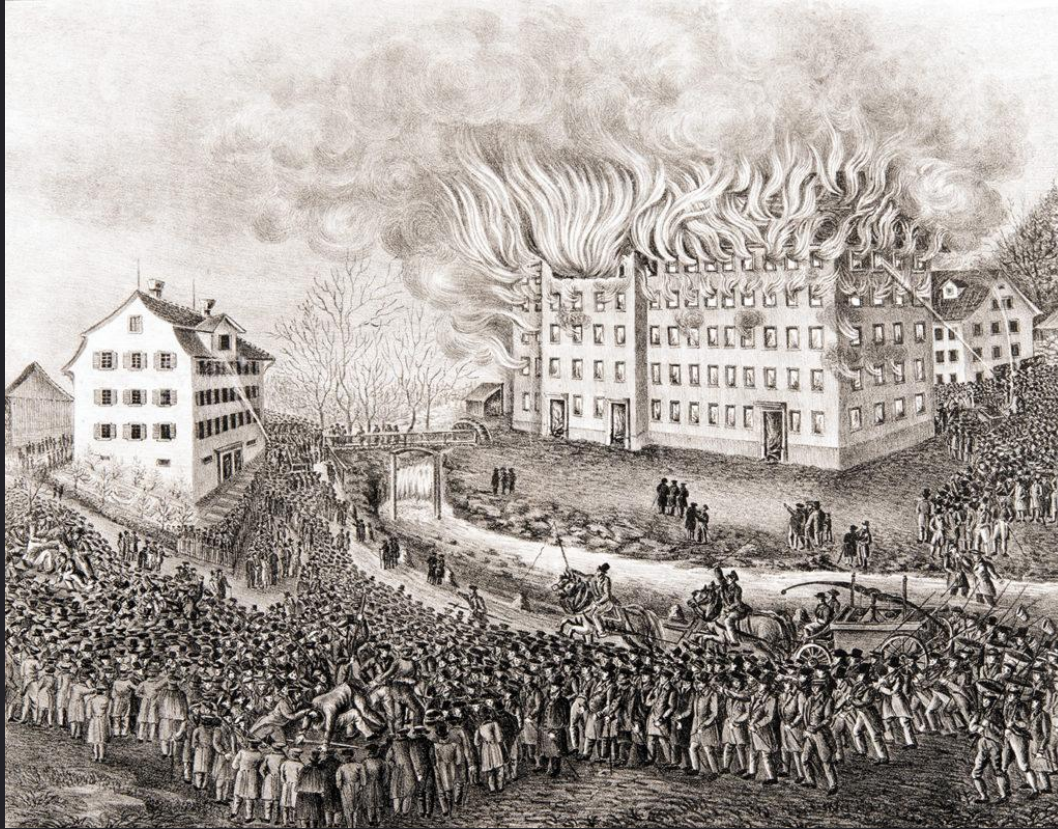
350 150'000 employees

- Start-ups established companies
- High salary costs not a problem anymore white collar revolution
- Potential GDP uplift breaking economic backbones (CH: 98% SMEs)





Brand von Uster 1832



Source: Wikipedia / Usterbrand



Bündner Autoverbot 1900-1925



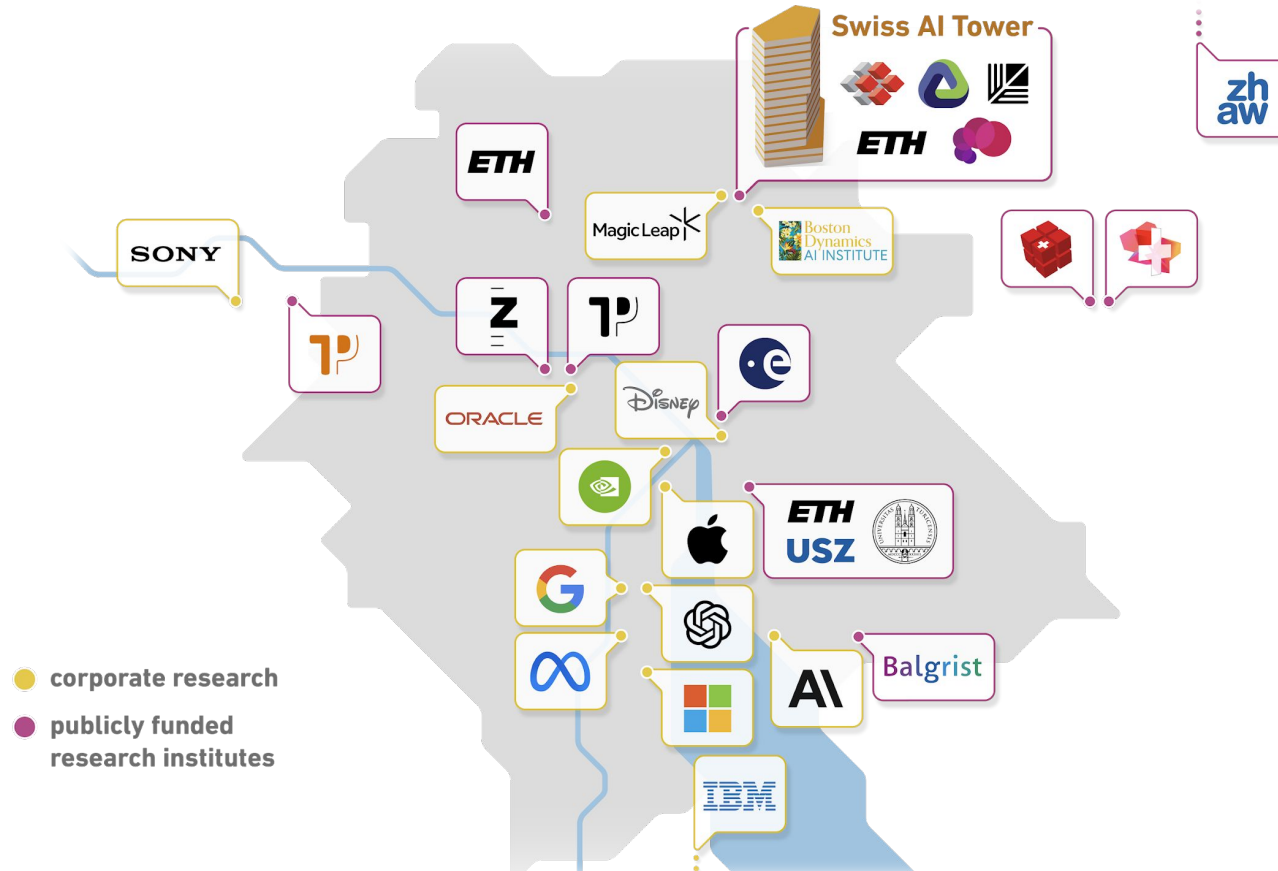
Source: Wikipedia / Stadtarchiv Chur

Different with AI:

- Potential to solve some of today's biggest challenges
- Potential for more inclusivity never been higher
- Language (in broadest definition) and access to support no barrier anymore
- Personalized assistance for (almost) everyone
- Anyone having access to 1000 interns



One of the most dense AI ecosystems in the world

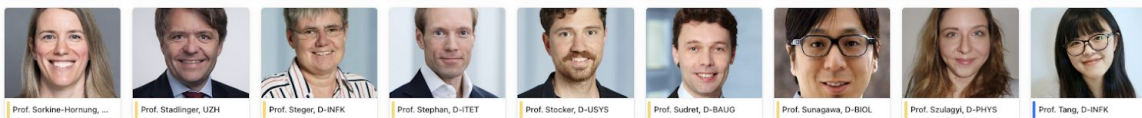




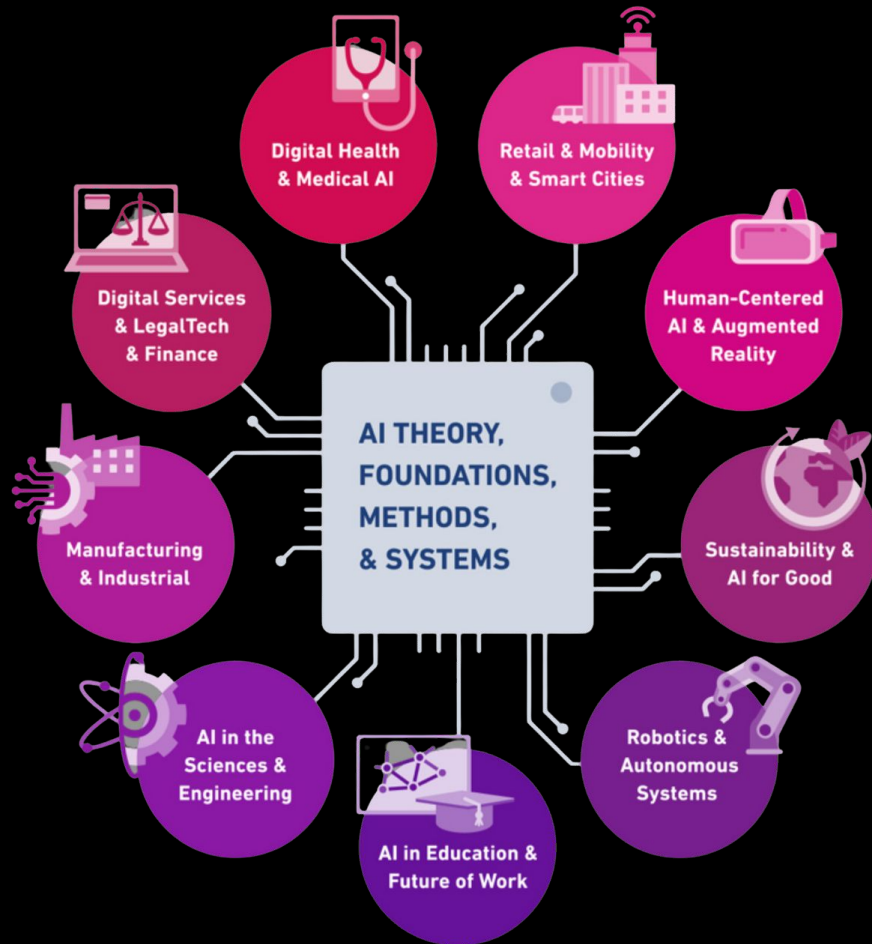
ETH AI CENTER

Amplifying the human potential
through **interdisciplinary**
AI research and enabling the path
from **science to society**

ETH AI Center Faculty – Nov 2022



120+ Professors
200+ Post-Docs
1400+ PhD Students
2000+ Visitors at AI+X Summit
50+ Events in 2023
20+ Corporate Partners
60+ Affiliated Startups
3200+ Community Members



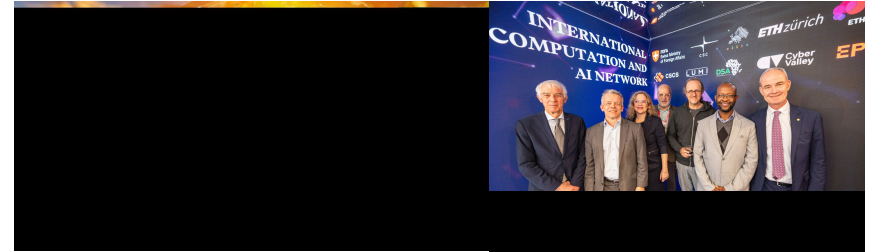
Selection of local activities with global implications

Collaborative Red Teaming

AI Threat Exploration & Mitigation Network ([link](#))

ICAIN

AI & Supercomputers for the SDGs ([link](#))



Human-centric AI in Health

Collaboration with university hospital Balgrist and UZH's OR-X to advance research & innovation in the future of surgery ([link](#)).

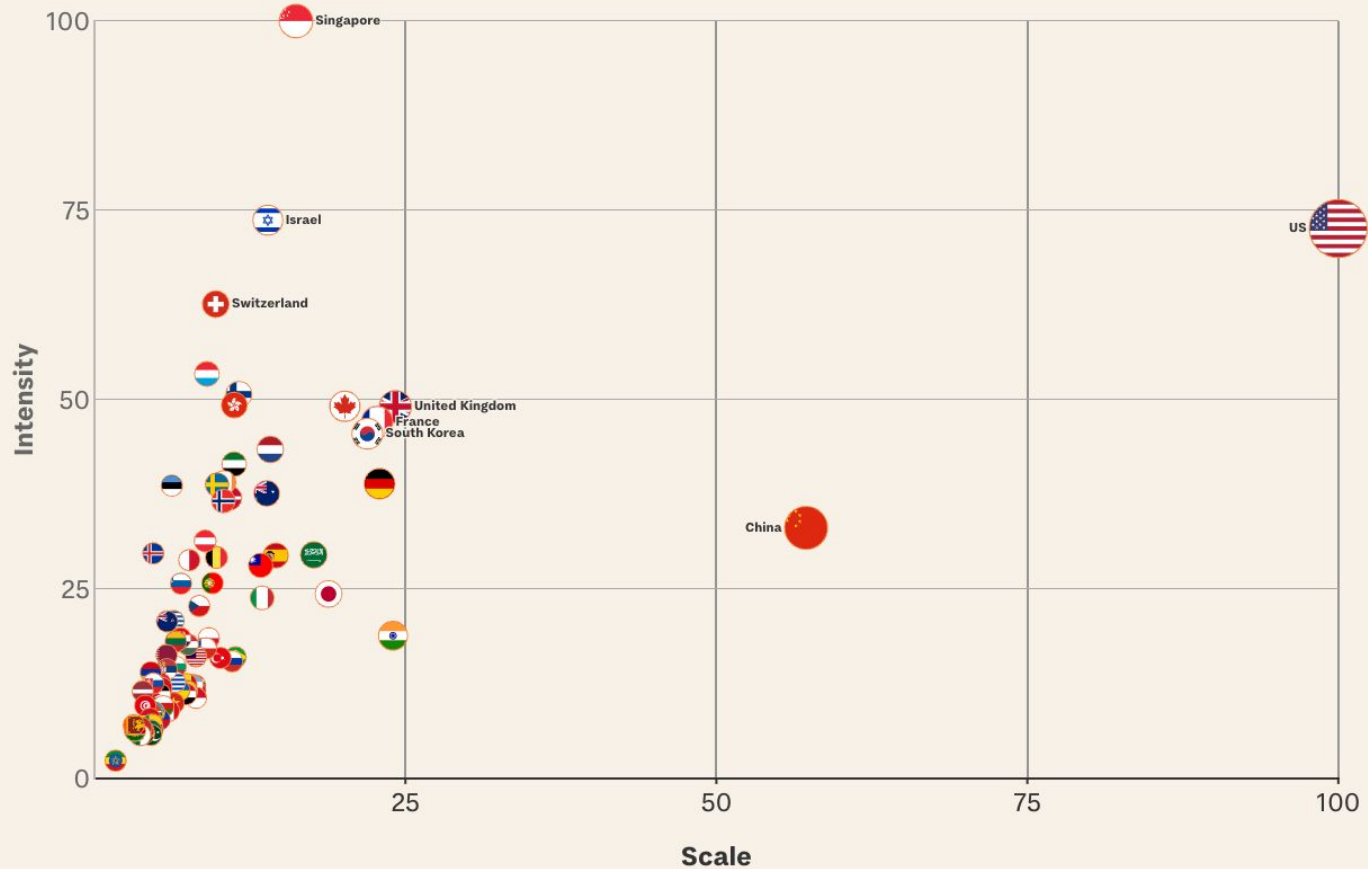


Swiss AI Initiative

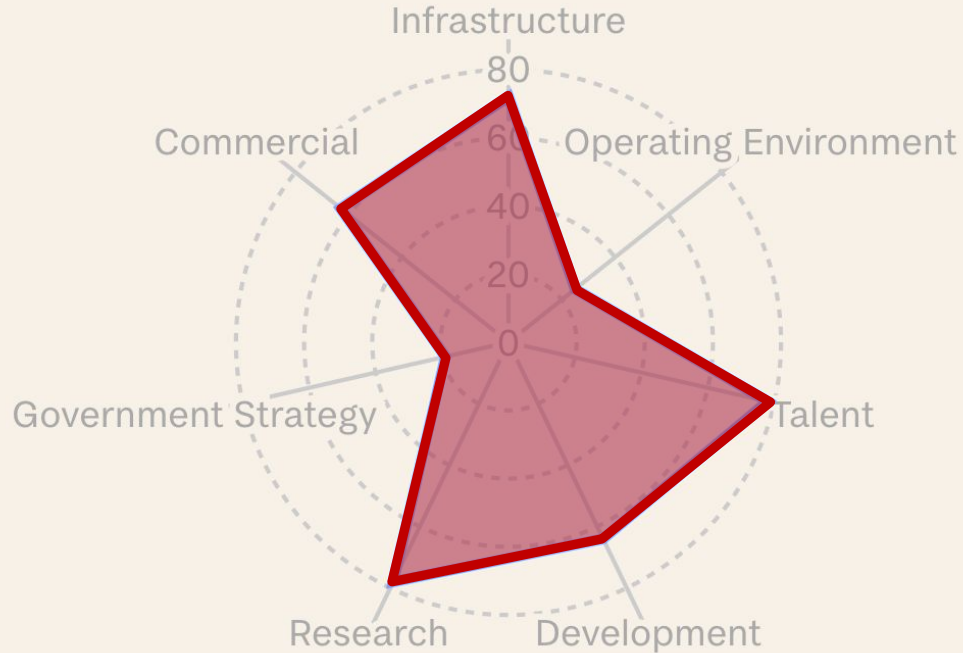
Led by ETH AI Center + EPFL AI Center to develop accessible, trust-worthy GenAI, open-source, domain specific foundation models ([link](#))



National AI Capacity



Position of **Switzerland**



Source: Tortoisemedia (2024)

Swiss AI

Leveraging the world's most AI-capable supercomputer

- **Fully Open ('open source')**
- **Vertical Specific**
Foundation models for: Education, Health, Sustainability/Climate, Vision/Robotics, Sciences
- **Swiss societal values**
Specifically: fairness, neutrality, multi-linguality, transparency and privacy preservation



Swiss AI

Leveraging the world's most AI-capable supercomputer

- Over 70 research groups involved
- Each area jointly led by ETH & EPFL PIs
- Embedded in newly founded Swiss National AI Institute (SNAI)



SWISS AI



Foundation
model for
sciences



Foundation
model for
education



Foundation
model for
ego-centric
vision & robotics



Foundation
model for
health



Foundation
model for
sustainability /
climate



Fundamentals of
foundation models

Prof. Yang, Prof. He,
Prof. Zdeborova,
Prof. Flammarion



LLM security, red
teaming & privacy

Prof. Troncoso,
Prof. Tramèr



Tools & infrastructure
for scaling

Prof. Klimovic,
Prof. Falsafi



Human-AI alignment

Prof. Ash,
Prof. Gulcehre



Large-scale
multi-modal models

Prof. Cotterell,
Prof. Zamir



Advanced LLMs

Prof. Bosselut,
Prof. Jaggi,
Dr. Schlag

Prof. Brbic,
Prof. Schwaller,
Prof. Marinkovic

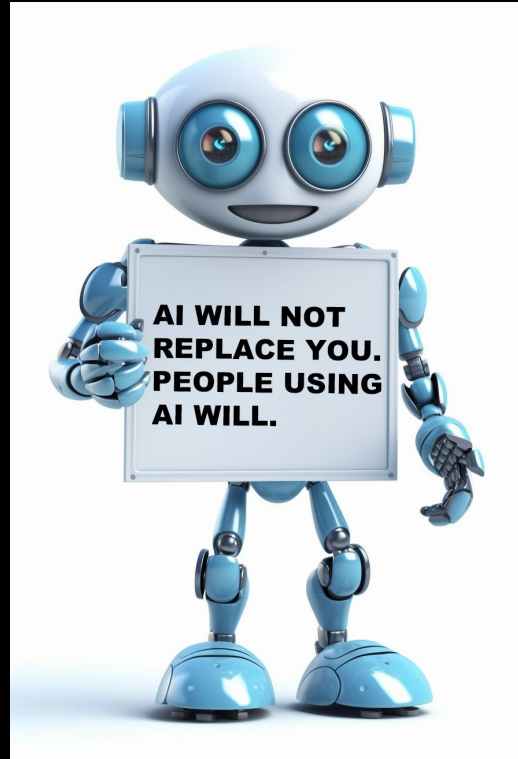
Prof. Käser,
Prof. Sachan

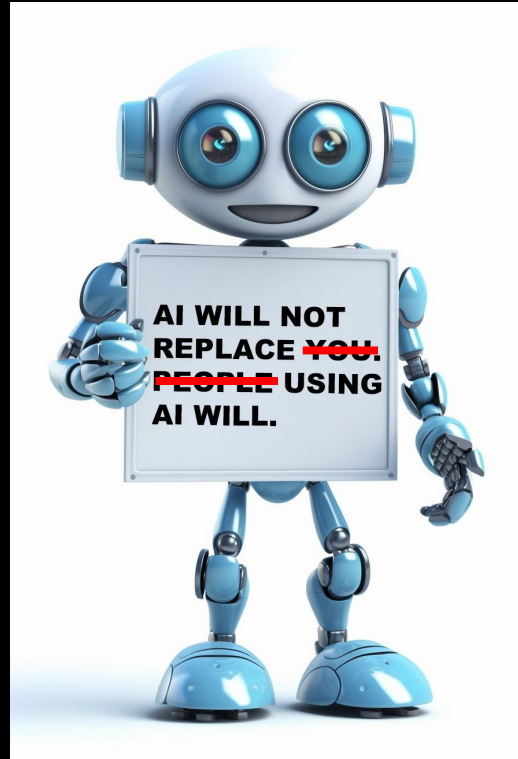
Prof. Alahi,
Prof. Pollefeys,
Prof. Katschmann

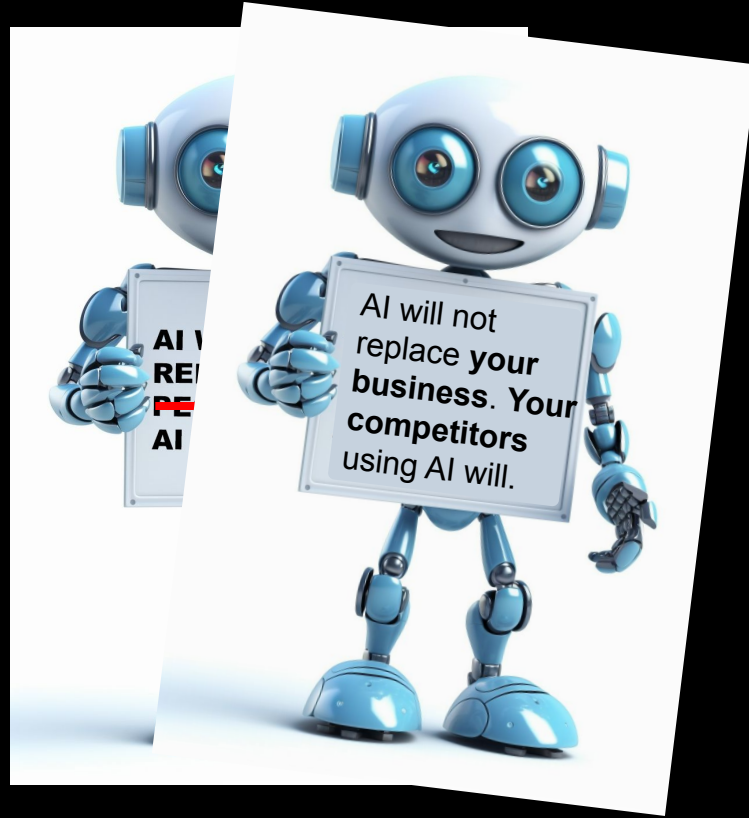
Prof. Rätsch,
Prof. Salathé,
Prof. Fellay

Prof. Mishra,
Prof. Schemm,
Prof. Schindler,
Prof. Tuia









Learn more at <https://ethz.ch/ai>



Contact

Daniel Naeff

Head of Innovation & Entrepreneurship

Email: daniel.naeff@ai.ethz.ch

Mobile: +41 76 303 34 17

<https://linkedin.com/in/naeff>

<https://ai.ethz.ch/about-us/people/executive-office.html>